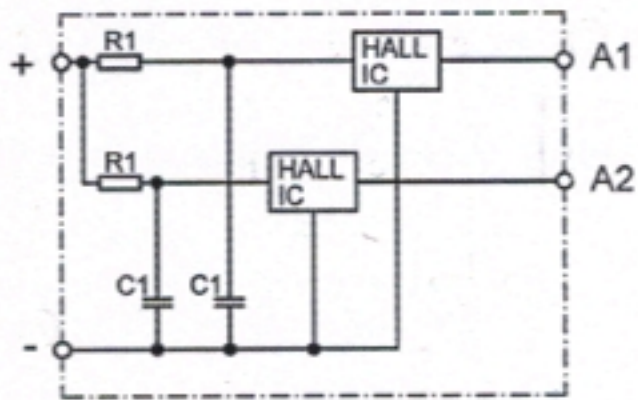


Baureihe DCK31

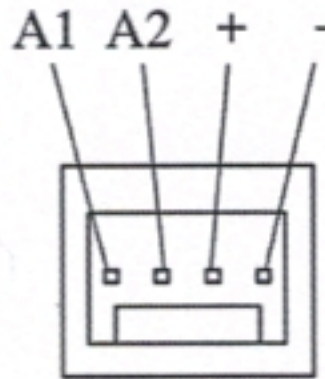
Motortyp 405588

Hallgeber S-ESD



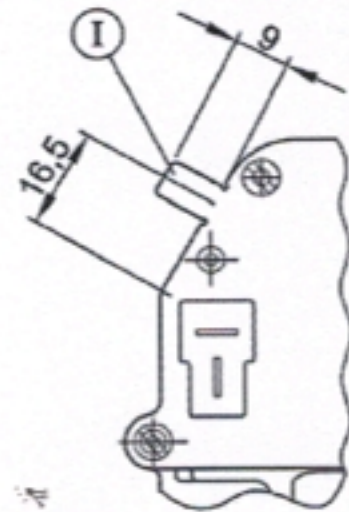
Richtwerte Pull-Up Widerstand
5 k Ω / 24 V
2 k Ω / 12 V
1 k Ω / 5 V

Anschluß K324



Gegenstecker: Panduit CF100 F22-04

Anschluß K312



Masseanschluß
Flachstecker 6,3 x 0,8 DIN 46 244