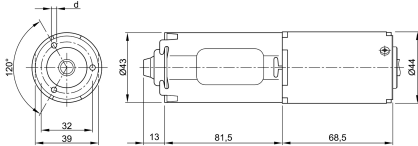


| Design Data | |
|-----------------------|----------------|
| Commutation | Brushed |
| Direction of rotation | Bi-directional |
| Bearing type | sleeve bearing |

| Performance data | | |
|-------------------------------------|-------|-------|
| Rated voltage [V] | U_N | 24 |
| Nominal torque [Nm] | M_N | 4.00 |
| No-load speed [min^{-1}] | n_0 | 200.0 |
| Nominal power [W] | P_N | 69.8 |
| Nominal current [A] | I_N | 8.0 |
| Nominal force [kN] | F_N | 0.00 |
| Duty cycle | s2 | |

0231 B



| Sensor data | |
|-----------------|----|
| Pulses | 39 |
| Output channels | 2 |

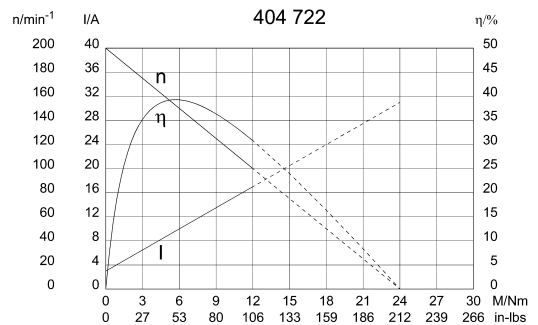
| Other data | |
|------------------------|------------------|
| Gear ratio | 39.7/1 |
| Gear wheel material | plastic |
| Suppression components | 4,0 μ H, 1nF |
| Enclosure class | IP 30 |
| Weight [kg] | 0.650 |

Remarks: d = 3,3mm, for self-cutting screw 4mm

Motor picture

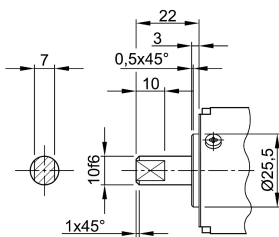


Characteristic curves

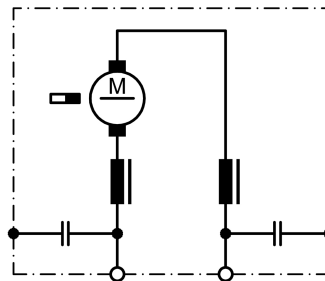


Output shaft drawing (W), Wiring diagrams (S) and Connector layout (K)

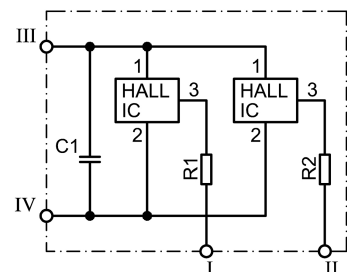
W 249



S 30



S 109



- I Terminal 1, OUT A1, grey
- II Terminal 2, OUT A2, black
- III Terminal 3, +, white
- IV Terminal 4, -, red

